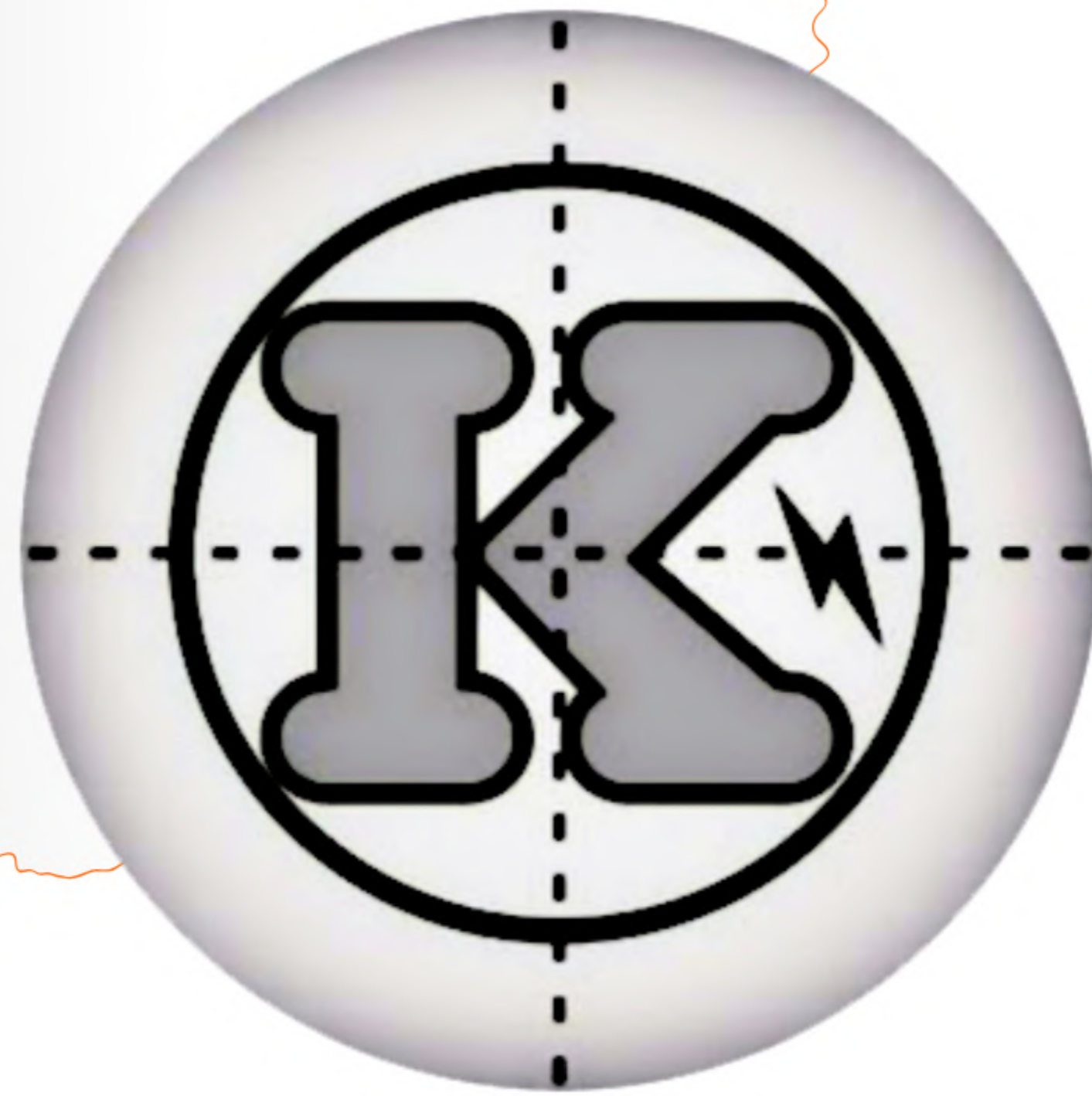


KLASS[®]

Electric Company

EST. 1981

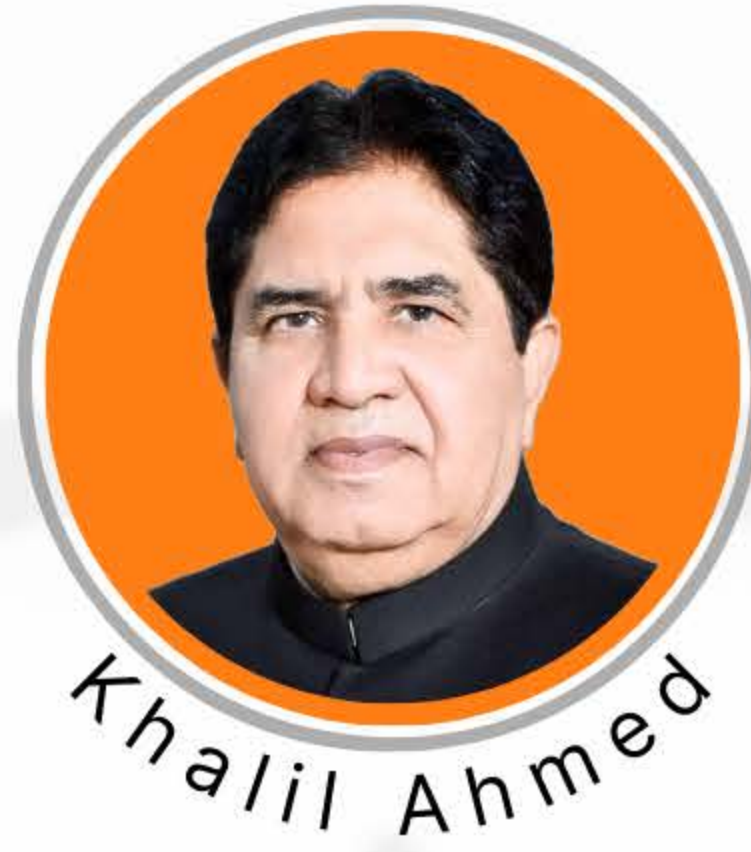


Our Pride ' Made in Pakistan '

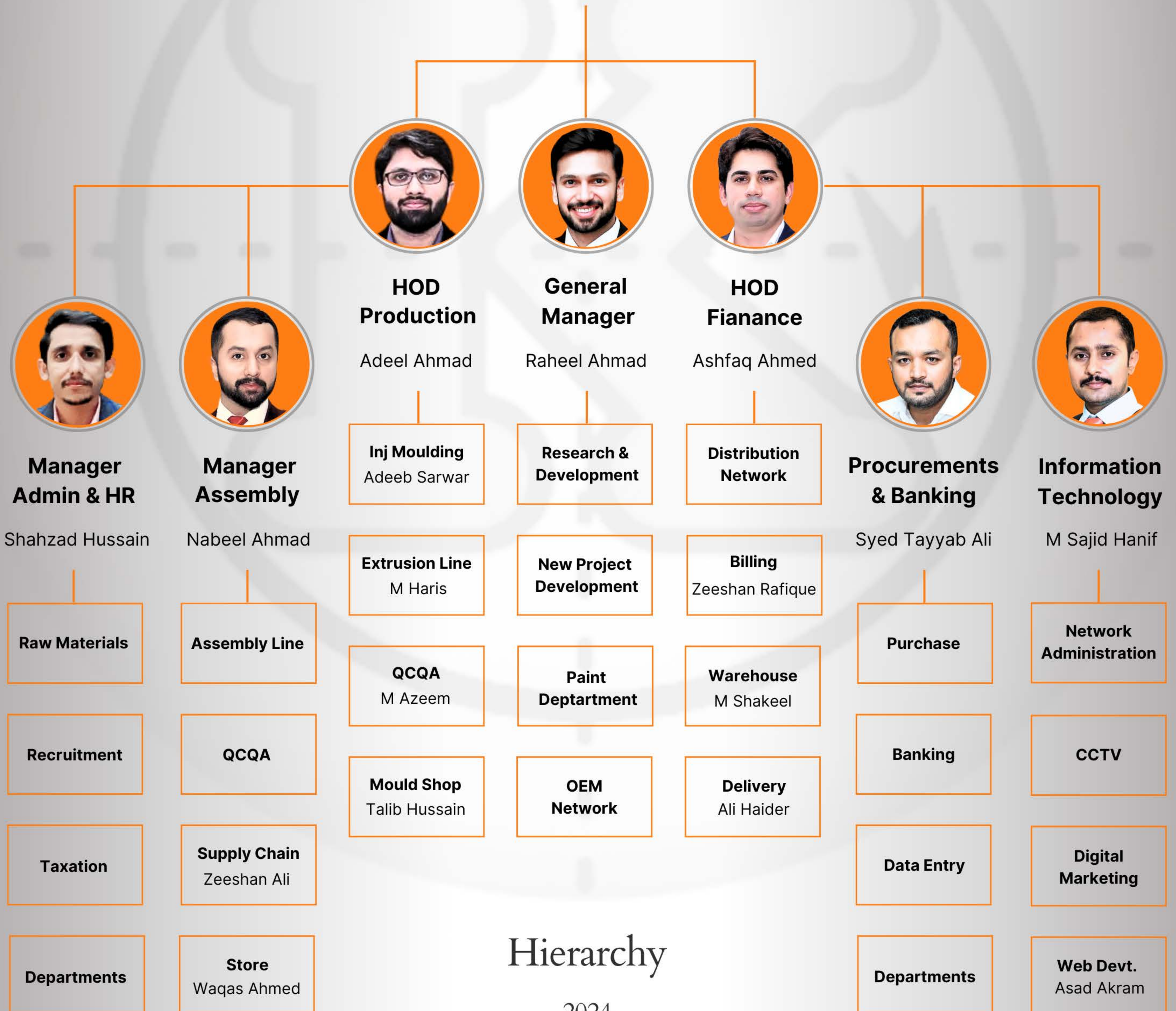
ISO: 9001-2015 Certified
Manufacturers of Quality Electric Goods



KLASS[®]



CEO



Hierarchy

2024



KLASS[®]

Our Pride ' Made in Pakistan '





KLASS[®]



CEO MESSAGE

KLASS aims to develop human capital by providing a diversified environment, where individuals from distinct backgrounds and capabilities can work together. Vacancies are offered to people with disabilities and women employment is encouraged at our facility. Our relentless efforts of creating job opportunities is a step to develop domestic industry of Pakistan.

We are working on localizing electrical switches and sockets on a larger scale as a way to cut down the import of electrical products. With our sincere intentions of contributing in economic growth of Pakistan; KLASS has successfully delivered about two dozen turnkey projects since 2019 and converted the major electrical switches trades & importers into local manufacturers.

With continuous innovation, we aim to achieve global recognition for premium brand of quality electrical products and we look forward to enlighten the slogan, '**Made in Pakistan**' around the world.

Khalil Ahmed
CEO



History

Khalq Electric Center was established on 19th November 1981 to cater the needs of quality electric goods that are affordable. It was a mere shop situated on Multan Road, Lahore. Where wooden wall boxes and plastic switch plates were made on a hand driven machine (Chappakka). By virtue of honesty, punctuality, regularity, devotion and high sense of responsibility, Khalq Electric Center soon gained fame in the area. By early 90s, owners were in desperate need of a bigger outlet in order to meet the high volumes of demand.

Khalq Electric Company (KEC) was then established in 1994 at Kharak Stop, Multan Road, Lahore. Along with retail, company also engaged whole sellers from around the city. Soon after, it was acknowledged as hub of electrical goods of all kind and got the attention of electric markets all over Punjab. It was a major breakthrough for company which opened the gateway for imported electrical goods that did not have local substitutes up to required quality standards.

Khalq Trading Company (KTC) was started later in 1998 to handle import of electrical switches and sockets, circuit breakers and lighting products. R & D team had scheduled visits of mainland china in this regard to design the products that are distinct and examine the quality thoroughly. KTC developed a distribution network and penetrated in electric markets county wide to cater the needs of high quality goods seekers. KTC then moved on to next step of local manufacturing under the brand name KLASS.

KLASS Electric Company was founded on 15th September 2005 with an innovation of converting wooden wall boxes into plastic. The idea was to protect the environment by resisting and slowing down deforestation. Initial manufacturing included concealed wall boxes, fan boxes, ceiling boxes and jointers in compliance with British, Italian and Pakistan standards. Conversion to plastic was highly appreciated and KLASS gained the market share expediently. In 2015, production of U-PVC pipes and accessories was started and our product range came to completion.

Localization of KLASS Switches is the biggest project initiated by company in year 2018 that aimed to cutdown the import of electrical switches and sockets. Results were tremendous, including Industrialization, boost to vendor industry, technology transfer, generating employment, cost effectiveness and producing export quality locally. In this regard KLASS set up Pakistan's first ultra violet automatic paint line too. All services related mould design & developments, injection moulding, painting, supply of parts & components are provided all over Pakistan to manufacturers, traders and individuals who wanted to be part of localization.

We feel proud proclaiming that more than 70 percent of electrical switches & sockets import has shifted to local manufacturing in last 5 years. All these efforts have been made to support Pakistan's economy during recession.



Quality Policy



Klass Electric Company is committed to provide superior quality products by adhering to (TQM) Total Quality Management that enhances confidence of our customers in our products.

- Creating work environment in accordance to quality standards of the regulatory bodies.
- Continuous improvements in processes and machining by adapting advance techniques and technology.
- Offering professional courses and technical trainings to our team for helping them understand wider aspects of quality.
- Keeping employees motivated to sustain work commitment.
- Making all workers understand that our ultimate target is customer satisfaction, in regard to product quality & after sales services.





Certifications

Number: 009349

PSQCA
Pakistan Standards
Government of Pakistan

Pakistan Standards and Quality Control Authority
Licence for the use of the Pakistan Standard Mark

Agreement No. 864/L-2094

Licence No. CML/N-864/2016

M/s. Klass Electric Company,

Address: 18-Km, Multan Road Near Highnoon Laboratories, Lahore.

Licence shall be valid from 7-Nov-16 to 6-Nov-17 and renewable as prescribed under the Rules.

Signature:

Dr. Shahzad Afzal
DIRECTOR

Place: Lahore

Date: 18-Nov-16

THE FIRST SCHEDULE		
PS Mark	Article / Process	Pakistan Standard(s)
1	2	3
	U-Pvc Electrical Conduits Sizes of Brand as per Annex A	QSS:1905/87

THE SECOND SCHEDULE			
Article / Process	Unit	Marking Fee Per Unit	Mode of Payment
1	2	3	4
U-Pvc Electrical Conduits Sizes of Brand as per Annex A	Ex-Factory Price	0.05%	Through Bank Draft Quarterly

CERTIFICATE

TÜV AUSTRIA

Management System as per EN ISO 9001 : 2015

In accordance with TÜV AUSTRIA procedures, it is hereby certified that

KLASS ELECTRIC COMPANY
18-Km, Multan Road, Near Highnoon Laboratories
LAHORE, PAKISTAN.

Applies a Quality Management System in line with the above Standard for the following Scope

MANUFACTURING OF UPVC PIPES & FITTINGS, WALL & CEILING BOXES, SWITCHES AND SOCKETS.

Certificate Registration No.: 20001230009452 Valid until: 2028-07-26

Ali Hameed
Business Unit Head - Business Assurance

Certification Body at TÜV AUSTRIA Lahore, 2023-07-27

This certification was conducted in accordance with TÜV AUSTRIA auditing and certification procedures and is subject to regular surveillance audits.

TÜV AUSTRIA HELLAS
429, Mesogion Ave,
GR-115 41 Athens, Greece
www.tuv.austria.com
CEM No. 1656201000

943804-21-4

ENVIRONMENT PROTECTION DEPARTMENT
Government of the Punjab
National Hockey Stadium, Ferozpur Road, Lahore
NO. DD/22/1/EP/PA/F-492(IEE)/2504/2012/ 826
Date: 14.1.2014

To
Mr. Khaleef Ahmed,
Proprietor,
M/S Klass Electric Company,
R/O House No.18-C, Madina Block, Awan Town,
Lahore.

Subject: **DECISION OF EPA, PUNJAB FOR EXTENSION OF M/S KLASS ELECTRIC COMPANY (MANUFACTURING OF PLASTIC ITEMS OF ELECTRICAL WIRING THROUGH INJECTION MOLDING), BACKSIDE HIGHNOON LABORATORIES, 18-KM, MULTAN ROAD, LAHORE**

(Under Section 12 of PEPA-1997 read with IEE & EIA Regulations, 2000)

- Description of Project: Extension/ capacity enhancement (Two new injection molding machines) of existing unit of M/s Klass Electric Company (Manufacturing of plastic items of electrical wiring through injection molding).
- Location of Project: The project site is located at Backside Highnoon Laboratories, 18-Km, Multan Road, Lahore.
- Date of submission: 30.06.2012.
- After review of Initial Environmental Examination (IEE) Report, Site Inspection Report of DOE and other relevant records, Environmental Protection Agency, Punjab has decided to accord its approval for extension/capacity enhancement of the abovementioned project to safeguard environmental issues subject to the following conditions:
 - The proponent shall ensure compliance of National Environmental Quality Standards (NEQS).
 - Mitigation measures suggested in the IEE Report and Environmental Management Plan (EMP) shall be strictly adhered to minimize any negative impacts on soil, ground water, air and biological resources of the project area.
 - Monitoring shall be carried out during the entire period of the project activities. Monitoring reports of the whole operation shall be submitted to EPA, Punjab on monthly basis.
 - The proponent shall not discharge untreated wastewater in a surface or sub-surface water body.
 - The proponent shall ensure efficient health and first aid treatment facilities for protection of workers.
 - The standby power generator (if required) shall be installed by adopting sound proofing techniques i.e. by installation silencer and it shall be equipped with proper smoke arrester / scrubber and stack / chimney with proper height to discharge the hot gases / smoke safely.
 - The proponent shall care about noise issues during construction and operation stage of the project.
 - The proponent shall not place the construction material openly.
 - The proponent shall establish a system for controlling fugitive dust and other emissions.
 - The proponent shall install treatment equipment in compatible with National Environmental Quality Standards (NEQS).
 - The proponent shall plant at least 2000 trees of minimum height 6-7 feet especially of indigenous species in and around the project area on available space within thirty six months in consultation with SIE Management.
 - The proponent shall do proper landscaping after completion of the project.





Facility



Our Pride ' Made in Pakistan '



U-PVC Pipes & Fittings

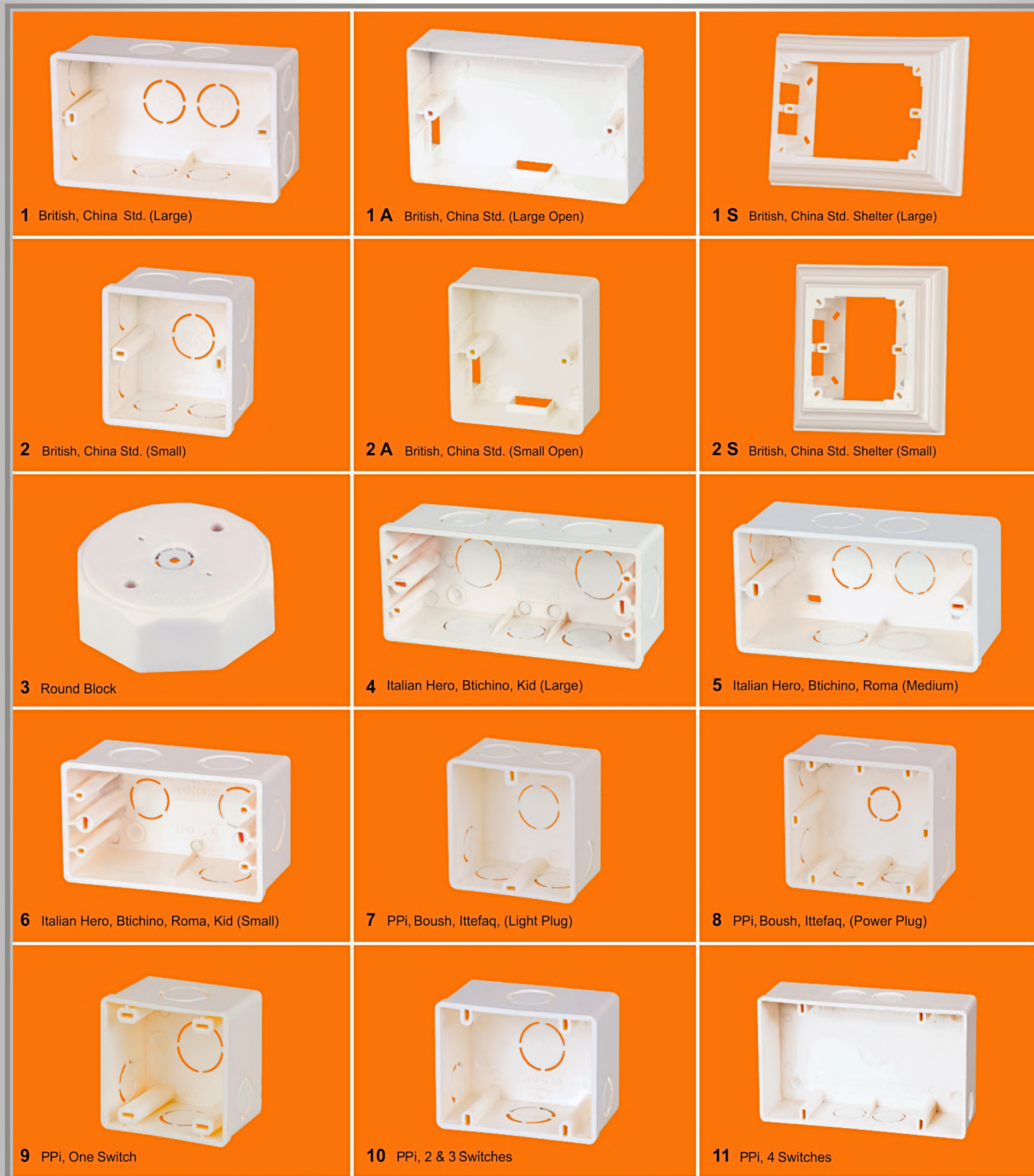


Product Range is compatible with British, China & Pakistan Standards

Our Pride ' Made in Pakistan '



Wall, Ceiling & Joint Boxes



Product Range is compatible with British, China & Pakistan Standards

Our Pride ' Made in Pakistan '



Wall, Ceiling & Joint Boxes



12 PPI, 5 & 6 Switches



13 PPI, 7 & 8 Switches, Legrand Mosaic (Large)



14 PPI, Boush, Ittefaq, Light Plug (Open)



15 PPI, Boush, Ittefaq, Power Plug (Open)



16 Italian Glamour, High Life, Vimour (Small)



17 Italian Glamour, High Life, Vimour (Medium)



18 Italian, glamour, high life, Vimour (Large)



19 Ceiling Light Box (4" x 4 1/2")



19 A Ceiling Light Box (4" x 4 1/2" with Collar)



20 Ceiling Light Box (3" x 4 1/2")



20 A Ceiling Light Box (3" x 4 1/2" with Collar)



21 Ceiling Light Box (3" x 3 1/4")



22 Local Box 4"x4"



23 Local Box 7"x4"



24 Local Box (9"x 4")

Product Range is compatible with British, China & Pakistan Standards

Our Pride ' Made in Pakistan '



Wall, Ceiling & Joint Boxes



25 Fan Box Steel Hanger



26 Fan Box Shock Proof



27 Ceiling Joint Box (1"x3")



28 Wall Joint Box (1" x 1 1/2")



29 Ceiling Joint Box (3/4" x 3")



30 Wall Joint Box (3/4" x 1 1/2")



31 Box Joiner



32 Exhaust Fan Box 10" (12"x12")



33 Exhaust Fan Shutter



4 A Italian Hero, Blichino, Roma, (X Large) As per Order



2 T British China Std. (Small Twin) As per Order



101 Joint Cover 4"



102 Fan Cover 7"



102 S Fan Cover 8"



103 Fan Cover Jointable

Product Range is compatible with British, China & Pakistan Standards

Our Pride ' Made in Pakistan '



Accessories



104 Extra Border Large



105 Extra Border Small



106 2 Pin Plug



107 2 Pin Plug



108 2 Pin Plug



109 2 Pin Vertical Plug



110 3 Pin Plug 5 amp



111 3 Pin Plug 15 amp



112 Lamp Holder B 22 (unbreakable Fireproof)



113 Lamp Holder E 27 (unbreakable Fireproof)



114 Energy Saver Lamp Holder Large E 27



115 Metal Box British China Std. (Large)



116 Metal Box British China Std. (Small)



117 Cable Clip size: 4,5,6,7,8,9,10,12,14,16



118 Rawal Plug No. 12

Product Range is compatible with British, China & Pakistan Standards

Our Pride ' Made in Pakistan '



KLASS Electric Co.

Half Long Gold Series



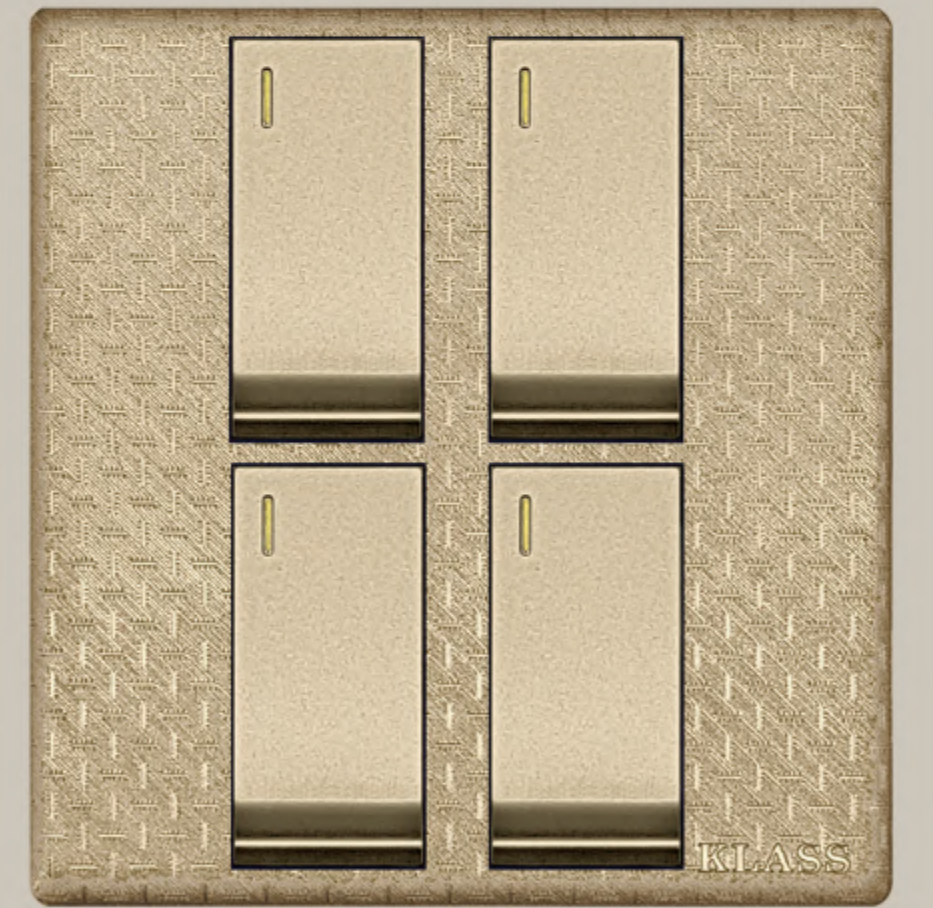
1 Gang / 2 Way



2 Gang



3 Gang



4 Gang



1+1



2+1



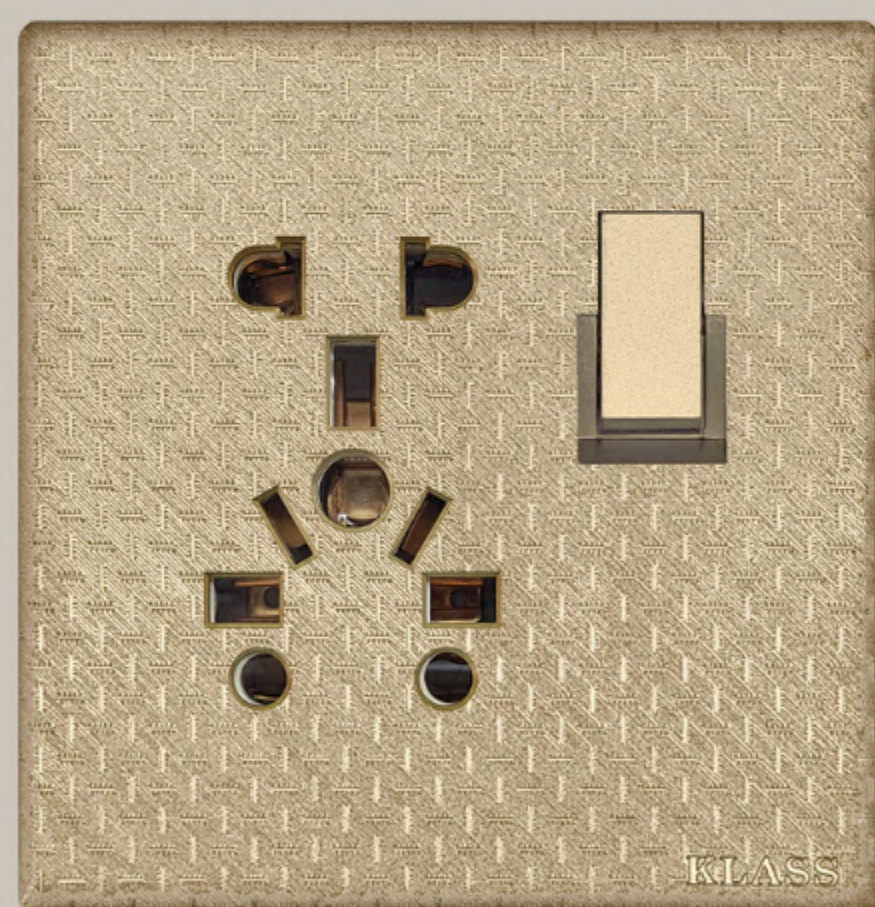
2+2



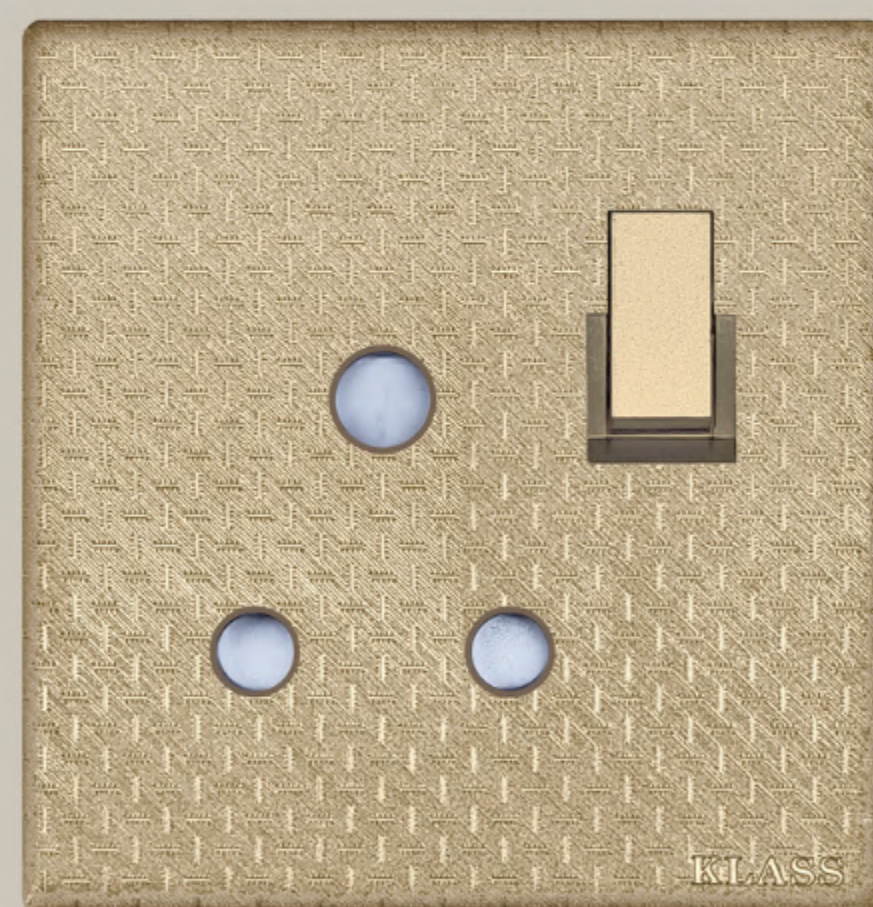
3+1



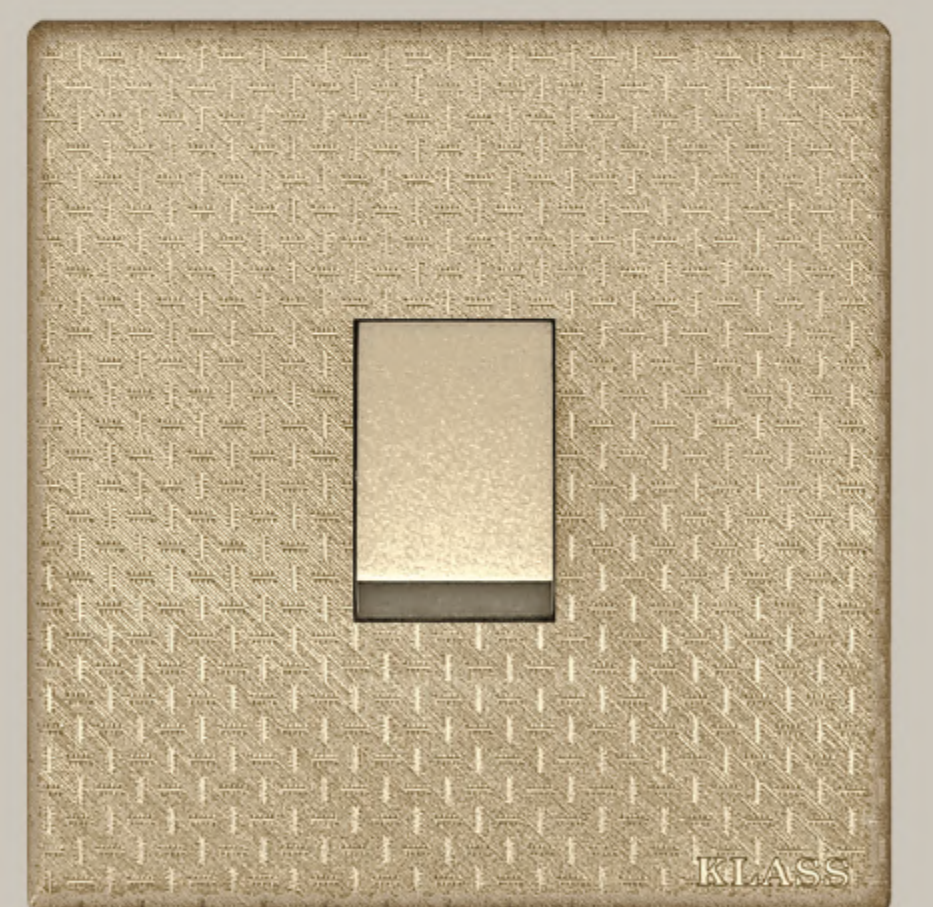
USB 2.0



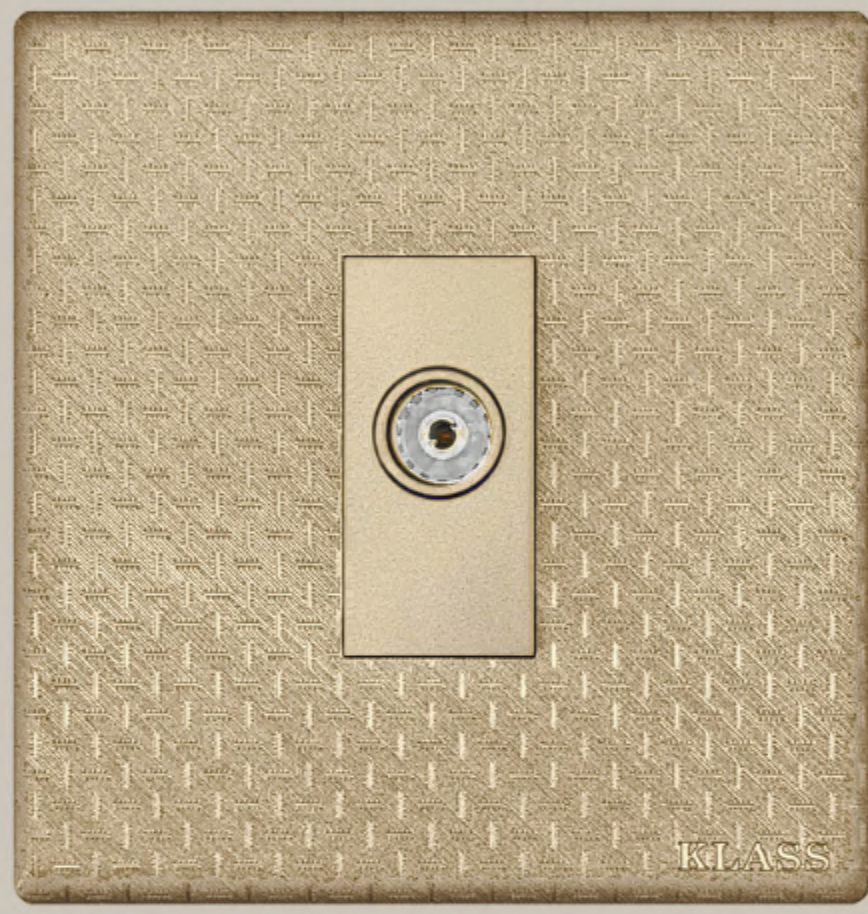
L/P 5 in 1



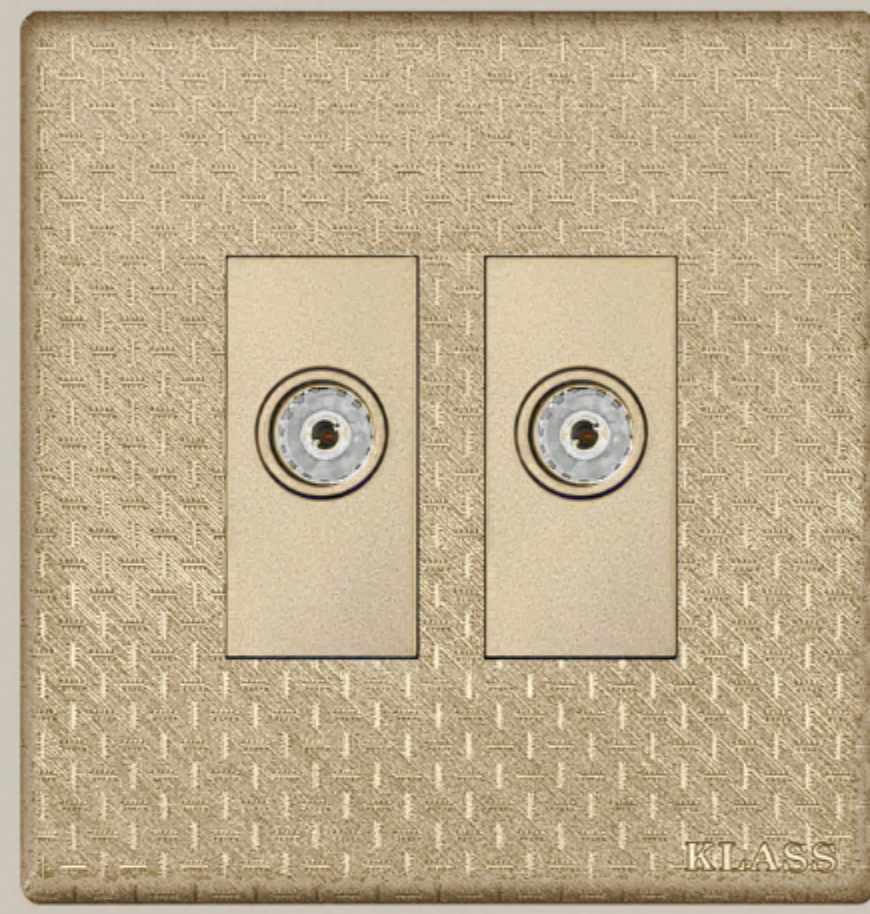
P/P 15-Amp



P/S 45A



Single TV



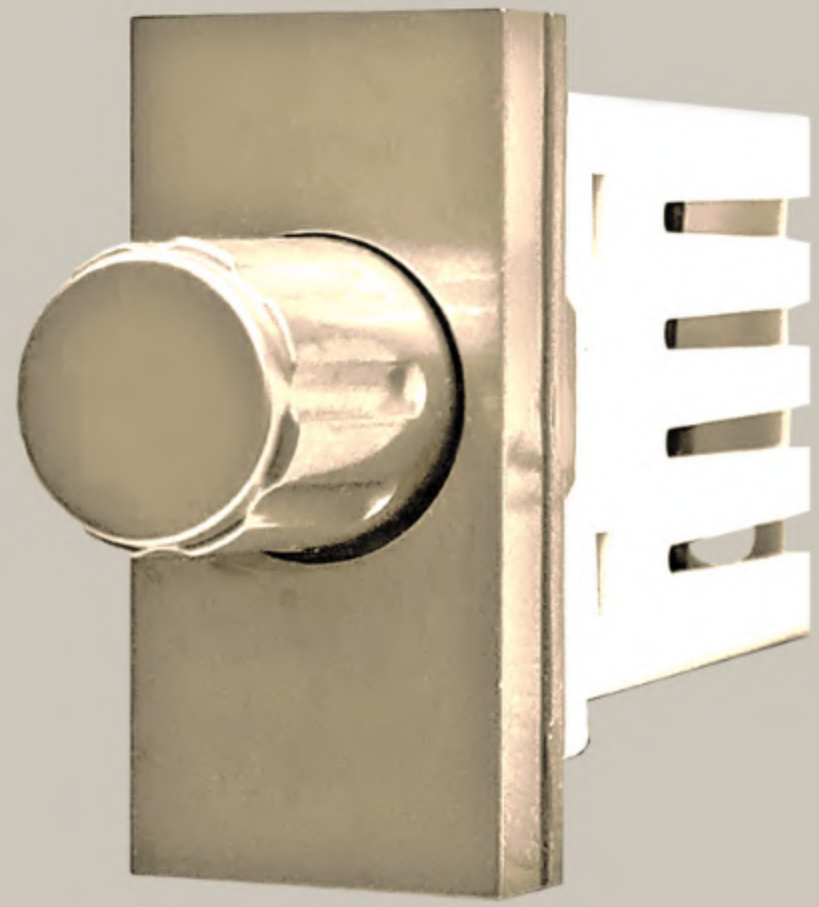
Double TV



Single Phone



Double Phone



Fan Dimmer



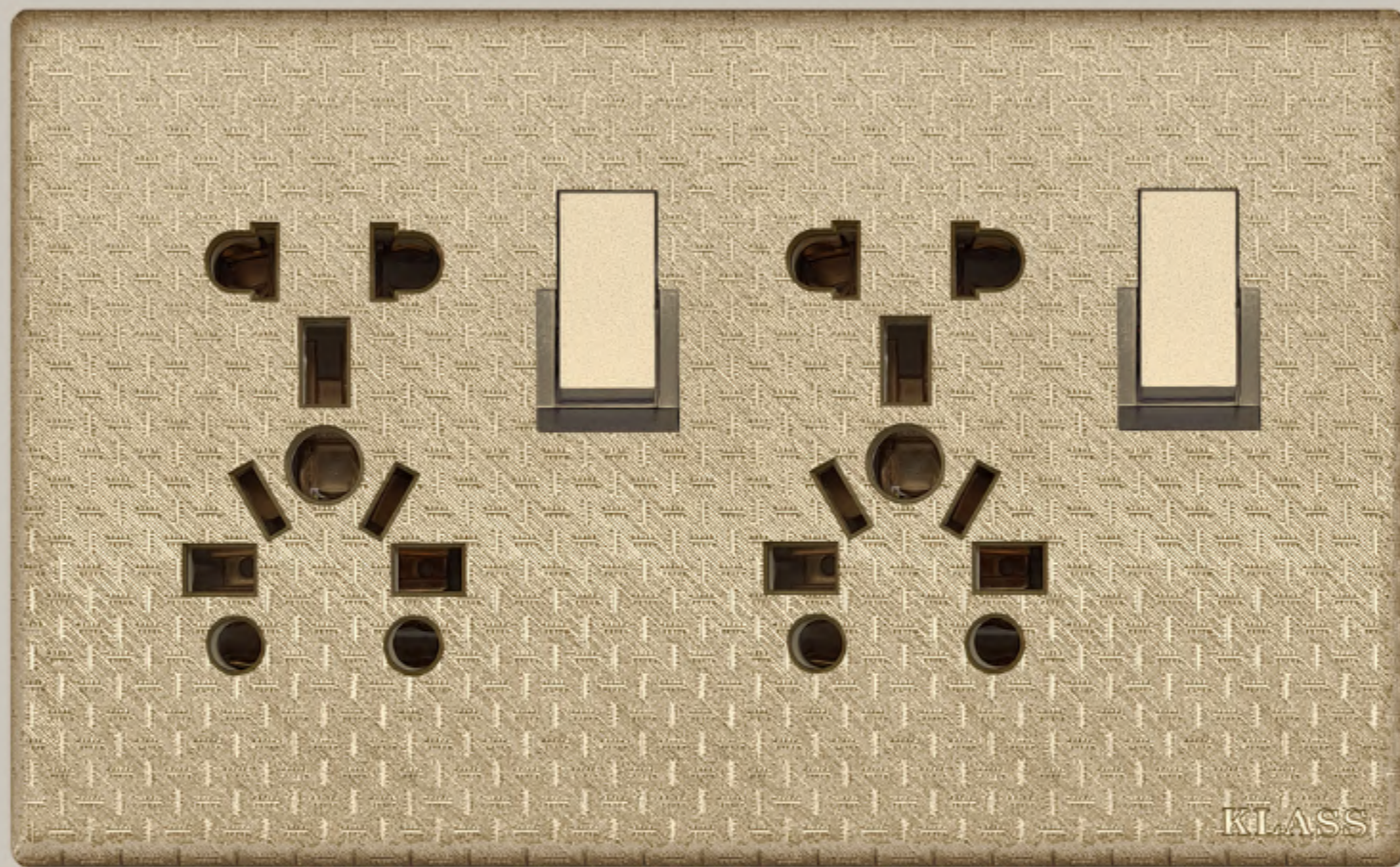
Single Data



Double Data



Tv + Phone



Two L/P 5 in 1



6 Gang



5 + 1



4 + 2



8 Gang



7 + 1



6 + 2



10 Gang



8 + 2

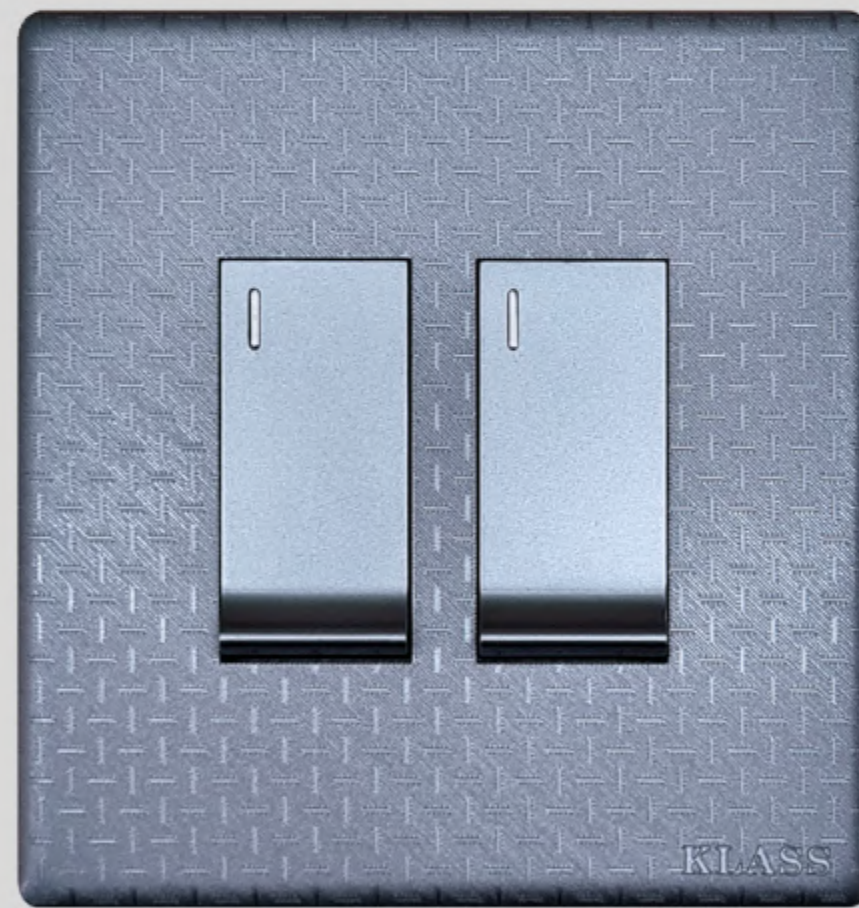


KLASS Electric Co.

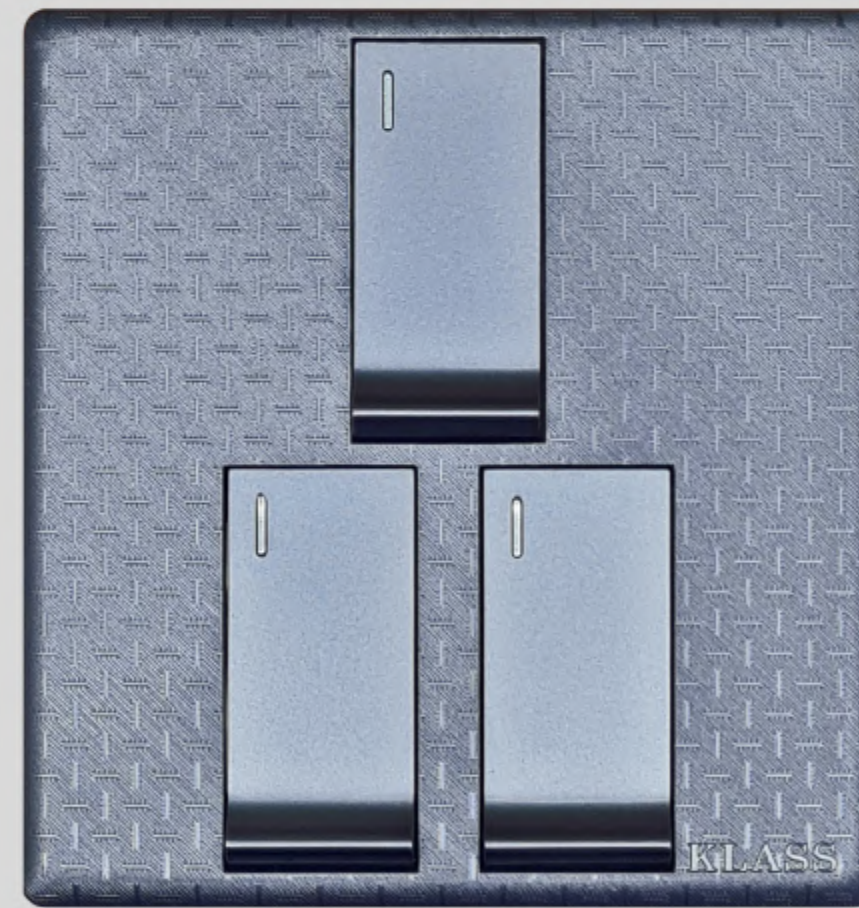
Half Long Grey Series



1 Gang / 2 Way



2 Gang



3 Gang



4 Gang



1+1



2+1



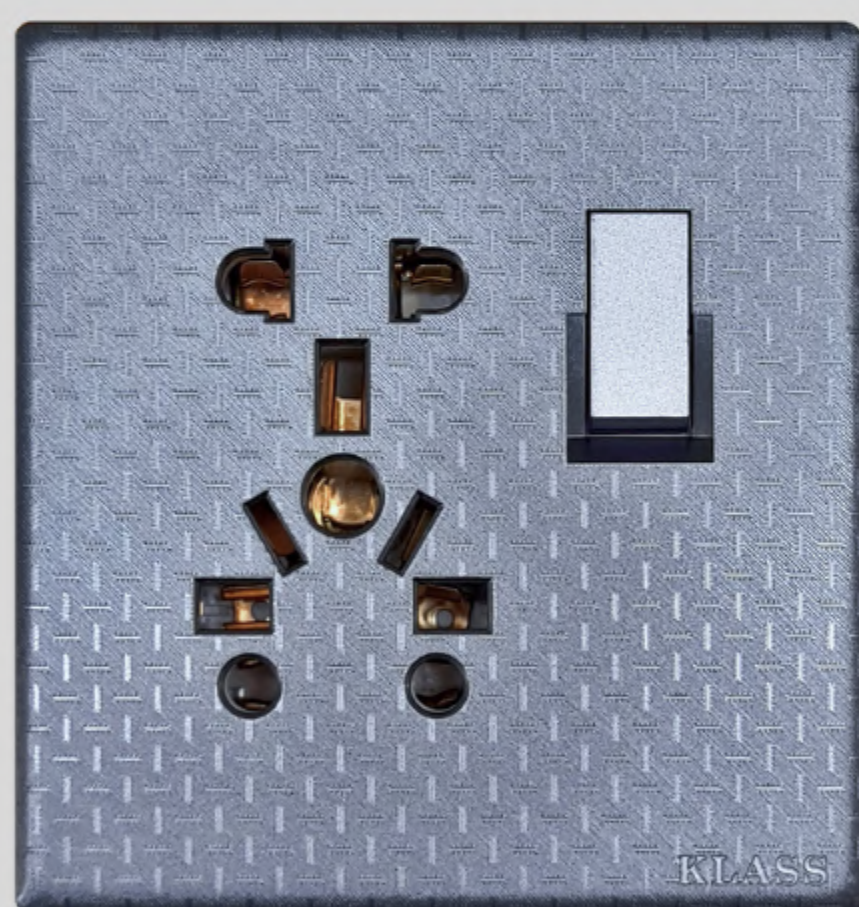
2+2



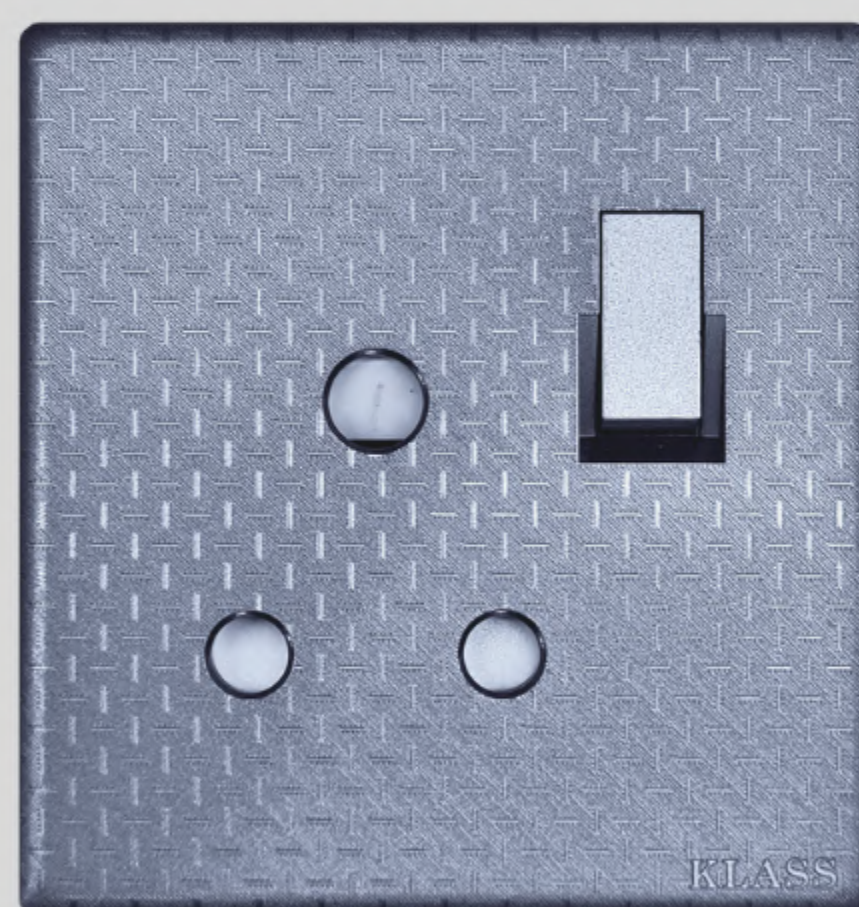
3+1



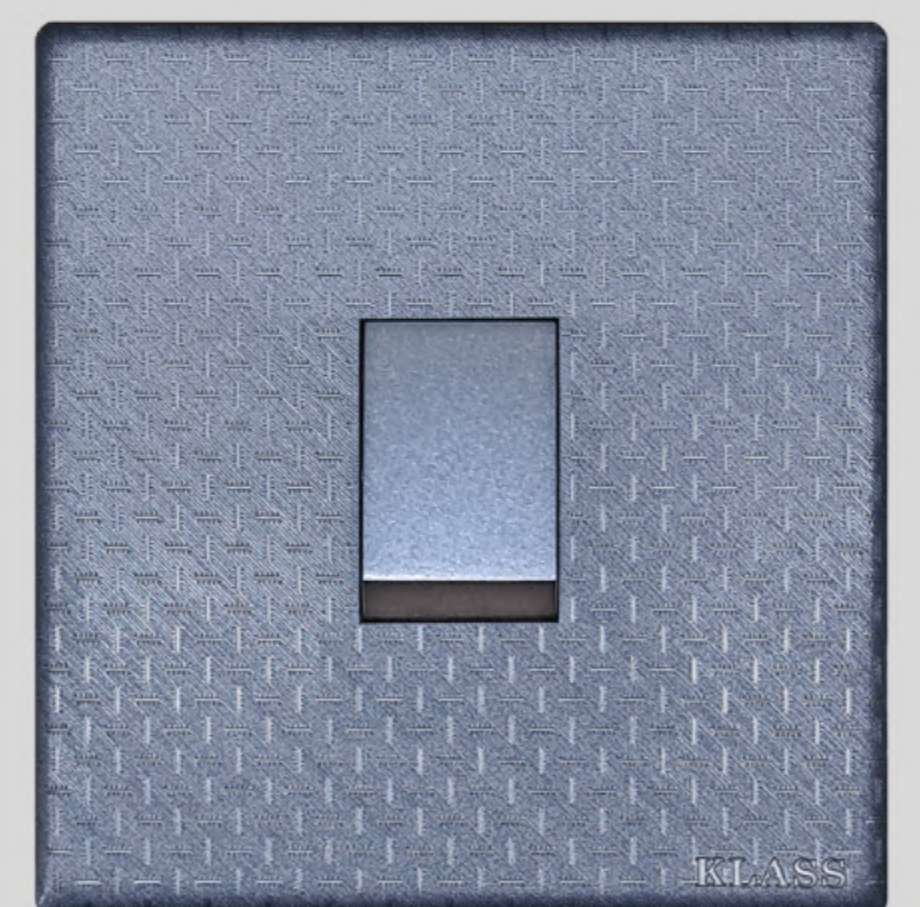
USB 2.0



L/P 5 in 1



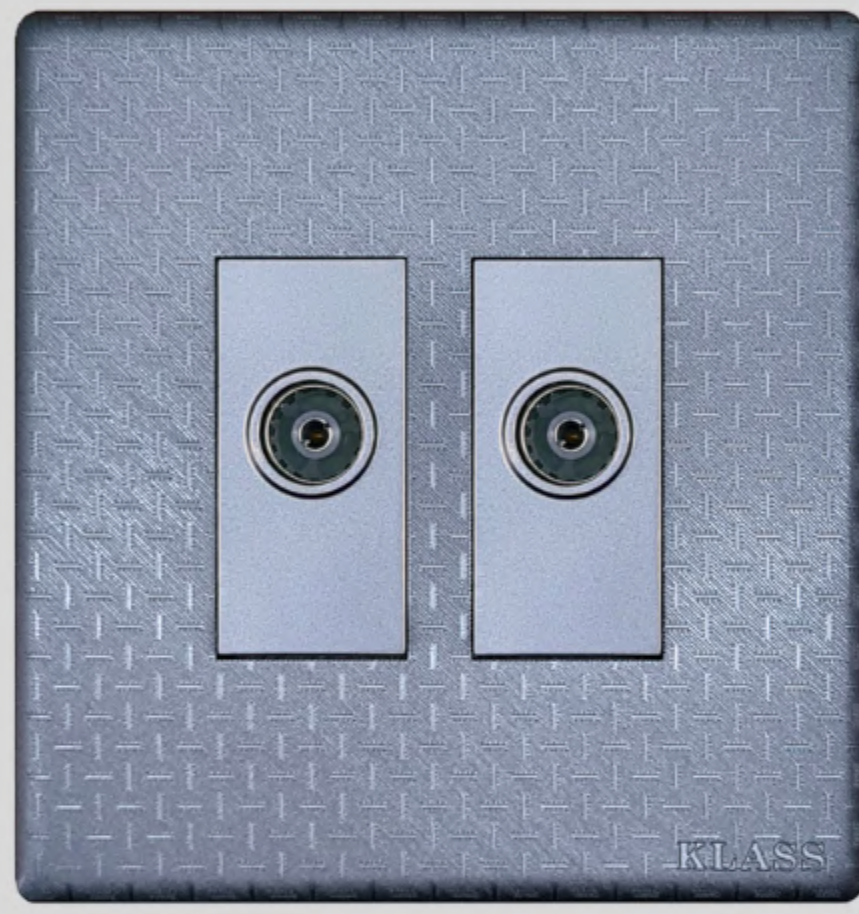
P/P 15-Amp



P/S 45A



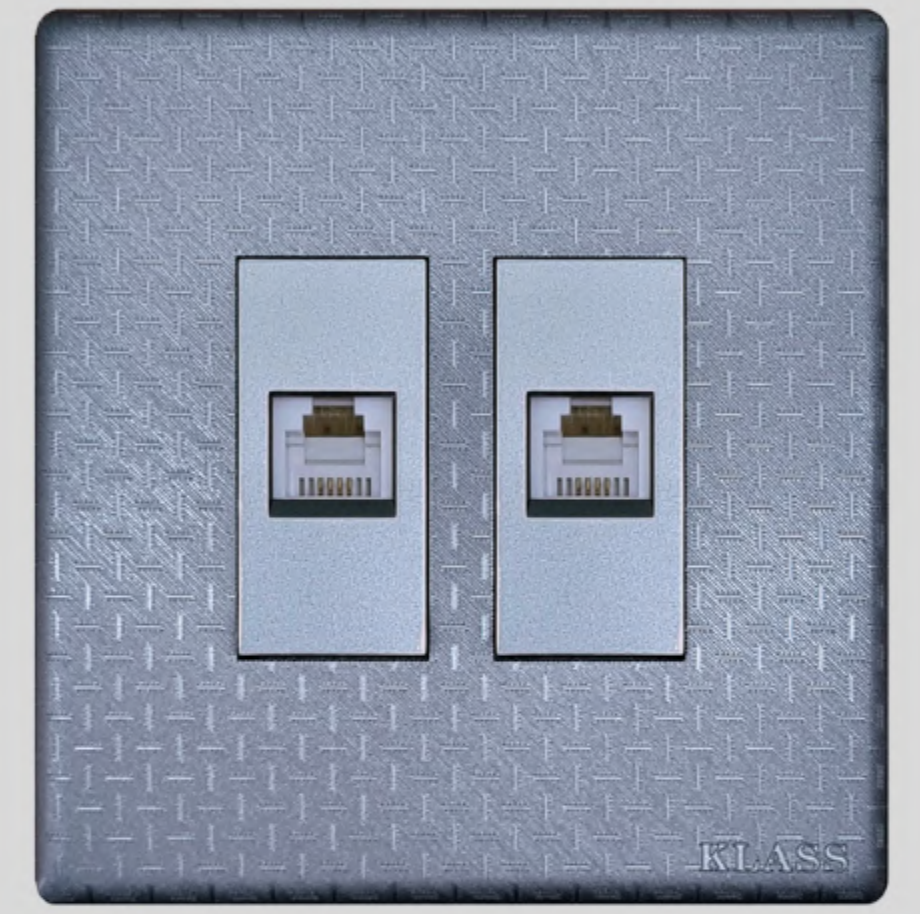
Single TV



Double TV



Single Phone



Double Phone



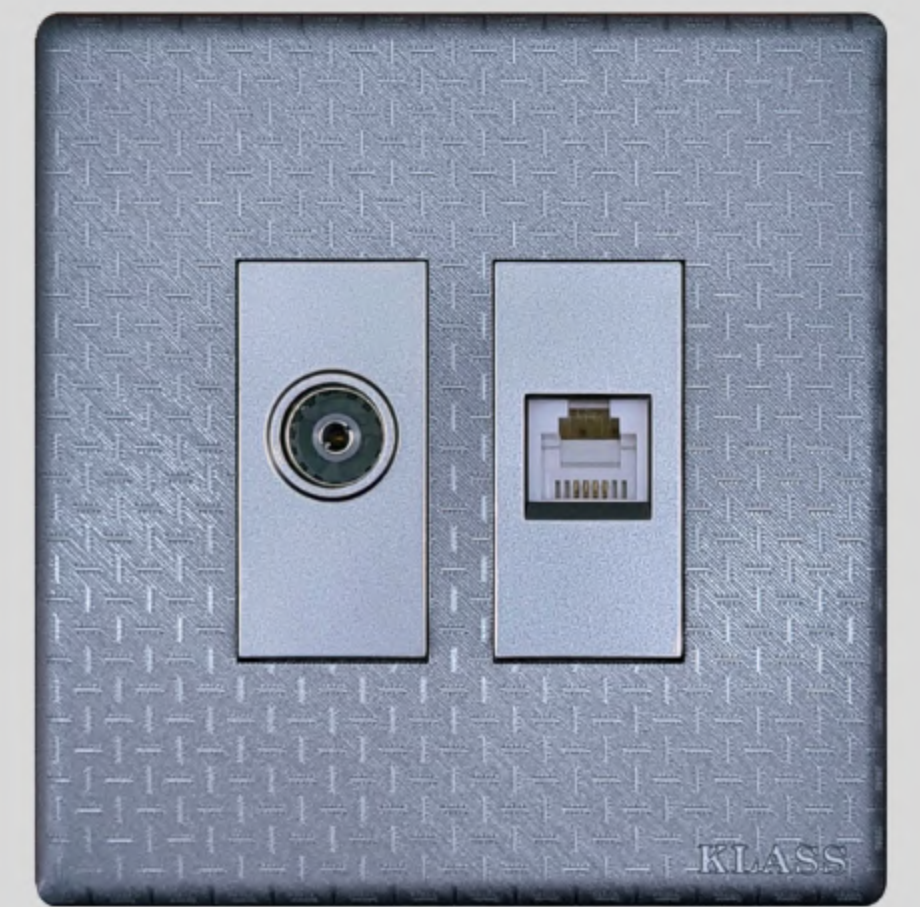
Fan Dimmer



Single Data



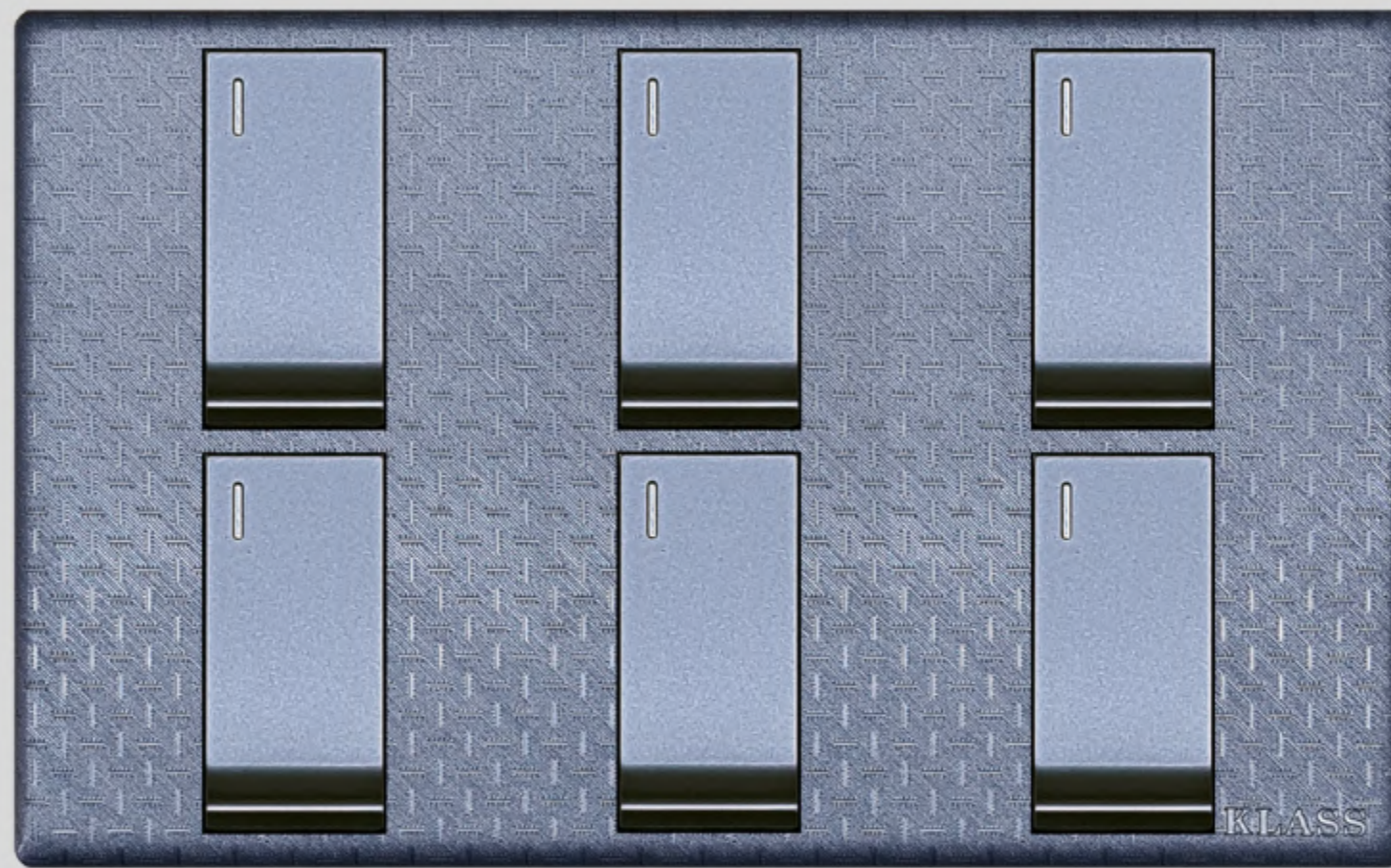
Double Data



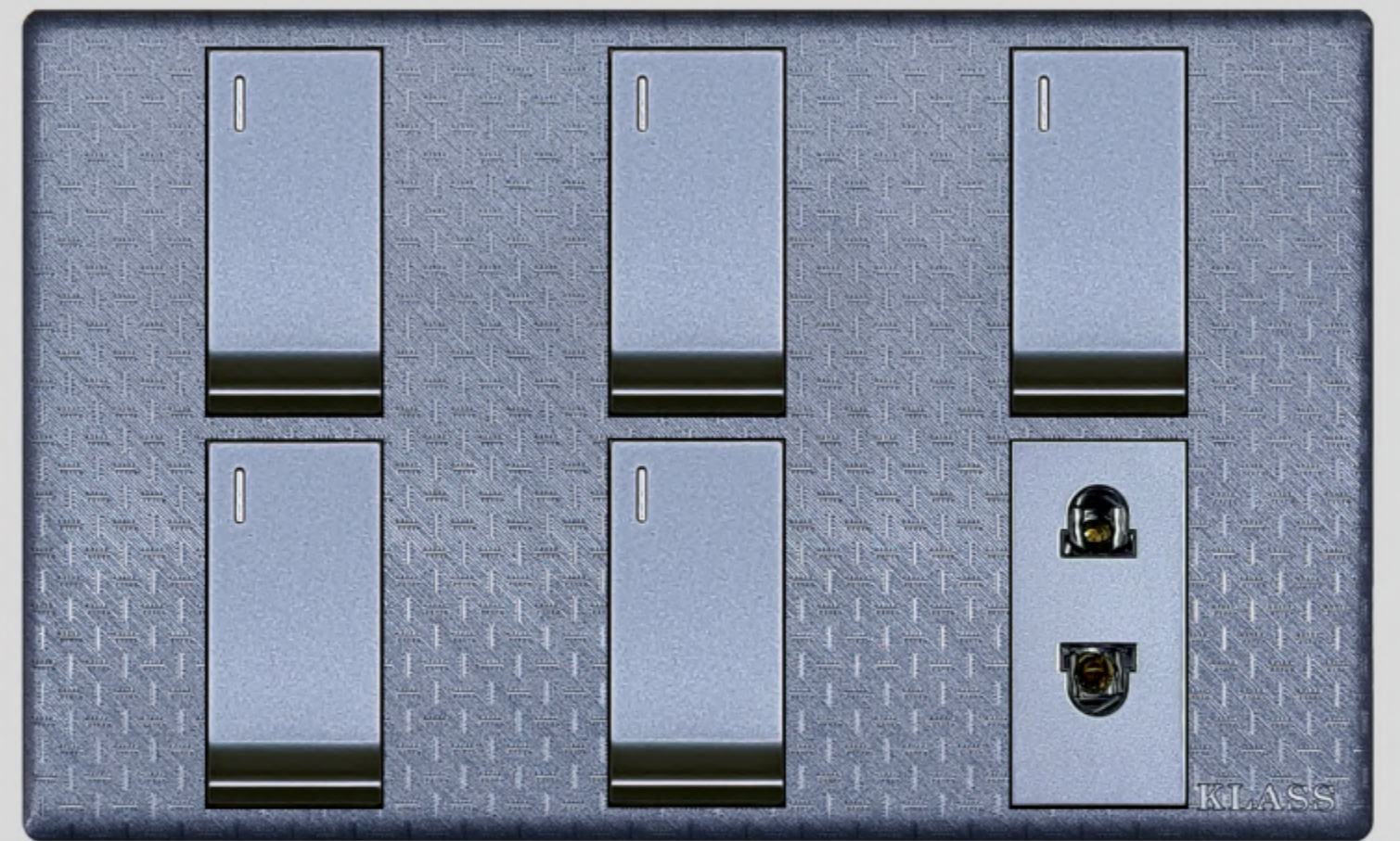
Tv + Phone



Two L/P 5 in 1



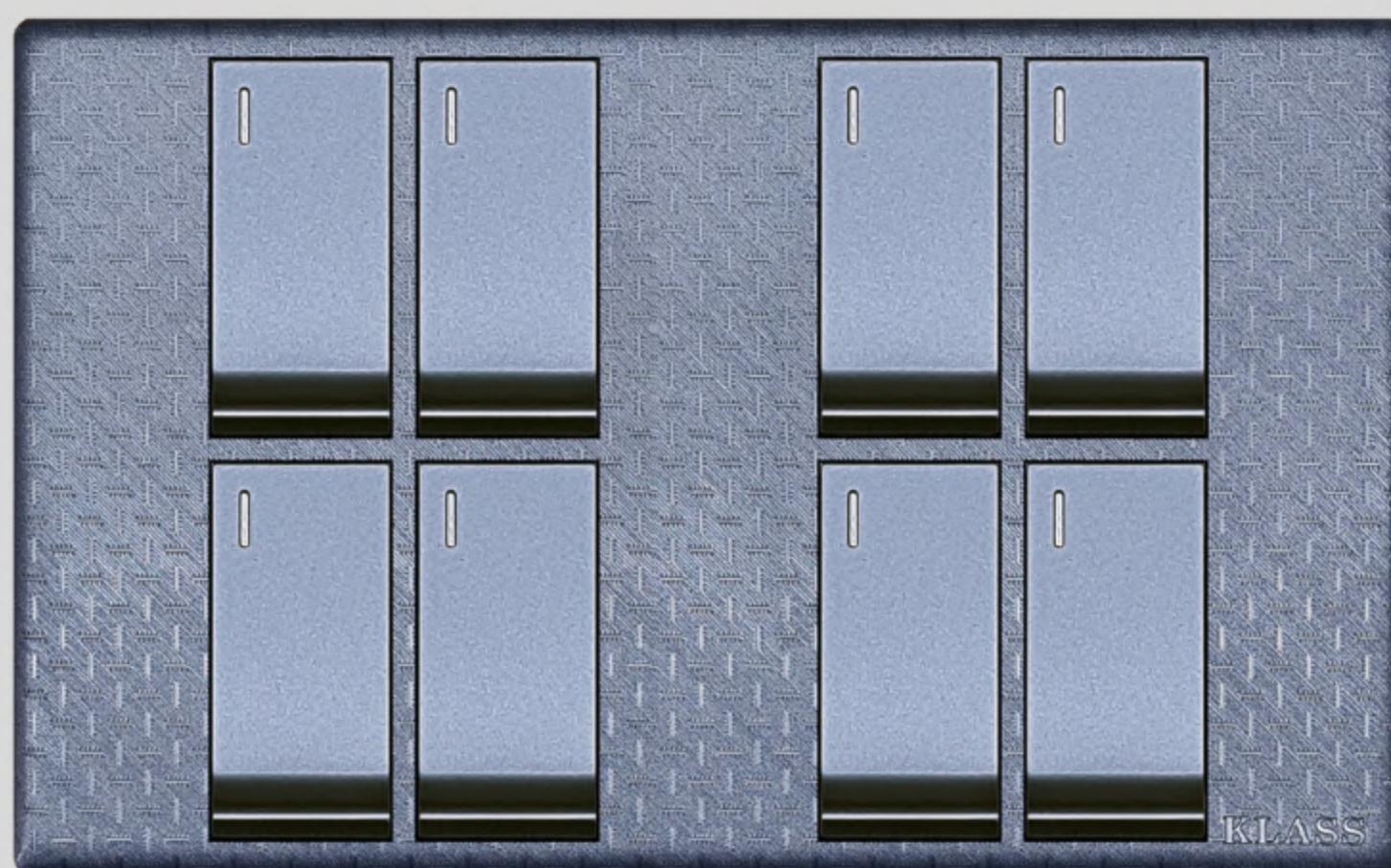
6 Gang



5 + 1



4 + 2



8 Gang



7 + 1



6 + 2



10 Gang



8 + 2



KLASS Electric Co.

Metal White Series



1 Gang / 2 Way



2 Gang



3 Gang



4 Gang



1 + 1



2 + 1



2 + 2



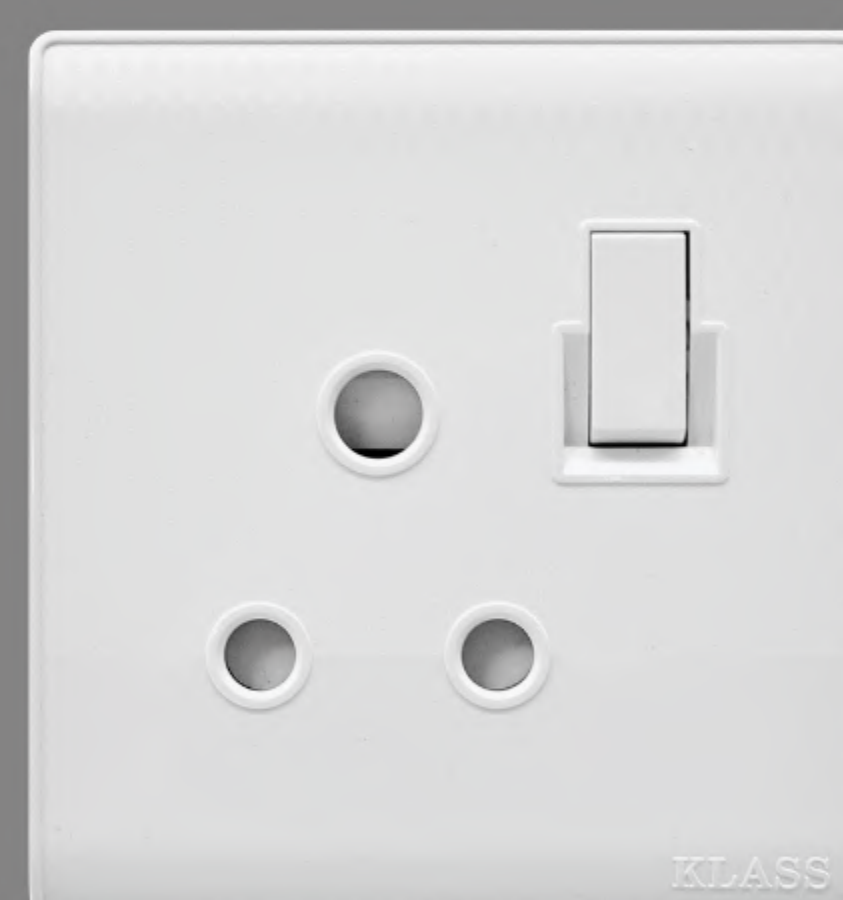
3 + 1



USB 2.0



L/P 5 in 1



P/P 15-Amp



P/S 45A



Single TV



Double TV



Single Phone



Double Phone



Fan Dimmer



Single Data



Double Data



Tv + Phone



Two L/P 5 in 1



6 Gang



5 + 1



4 + 2



8 Gang



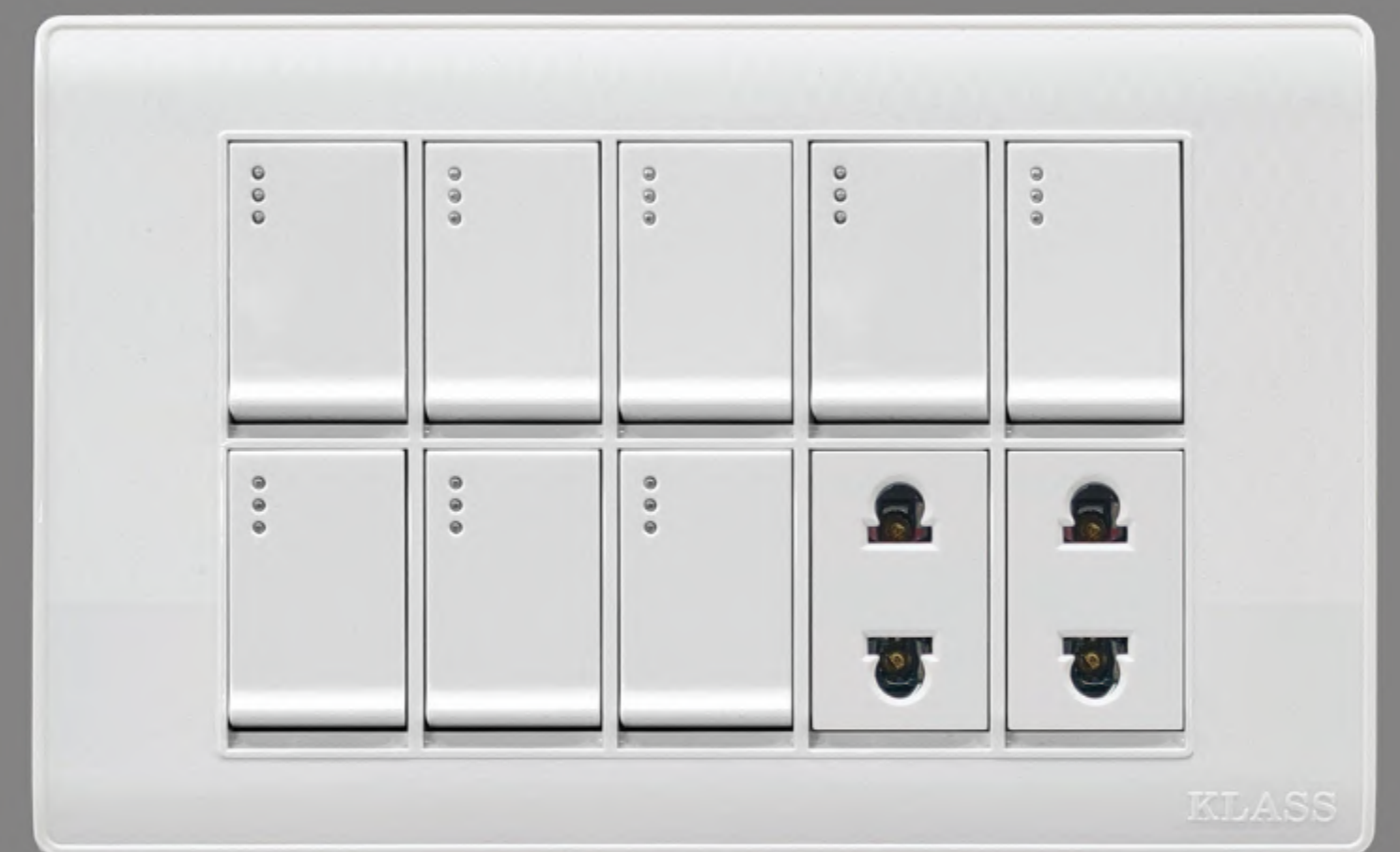
7 + 1



6 + 2



10 Gang



8 + 2



KLASS Electric Co.

Metal Gold Series



Go Bold

Add some Gold



1 Gang / 2 Way



2 Gang



3 Gang



4 Gang



1+1



2+1



2+2



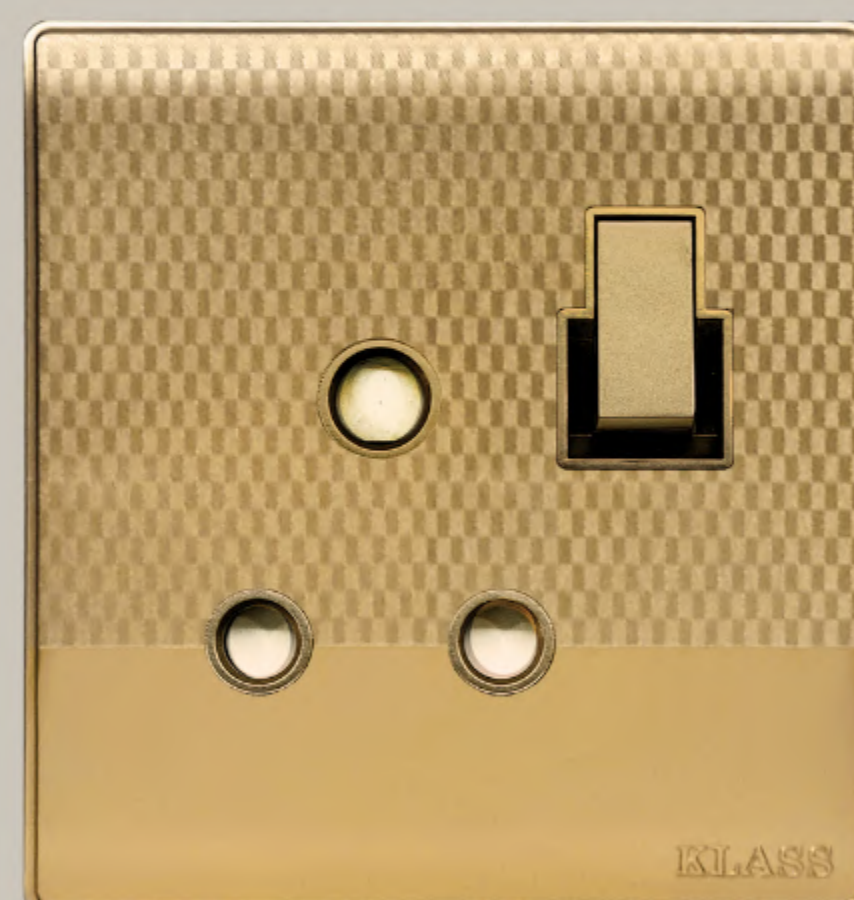
3+1



USB 2.0



L/P 5 in 1



P/P 15-Amp



P/S 45A



Single TV



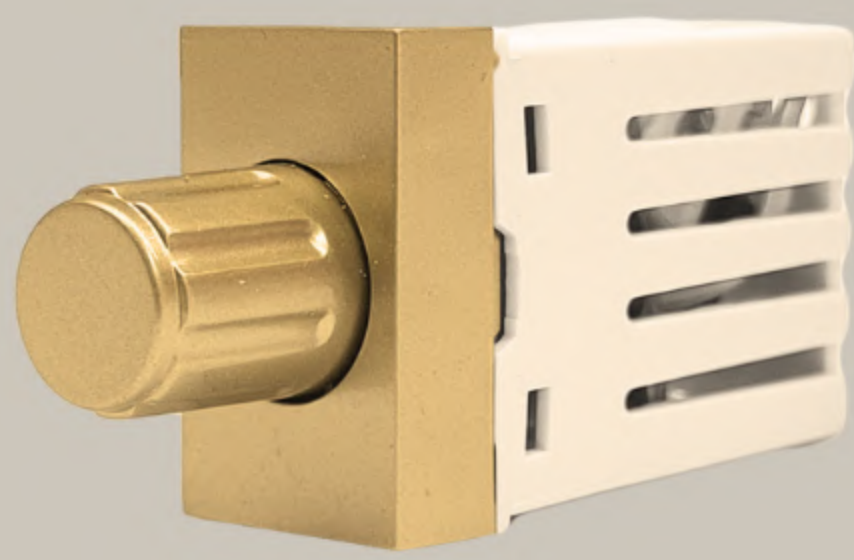
Double TV



Single Phone



Double Phone



Fan Dimmer



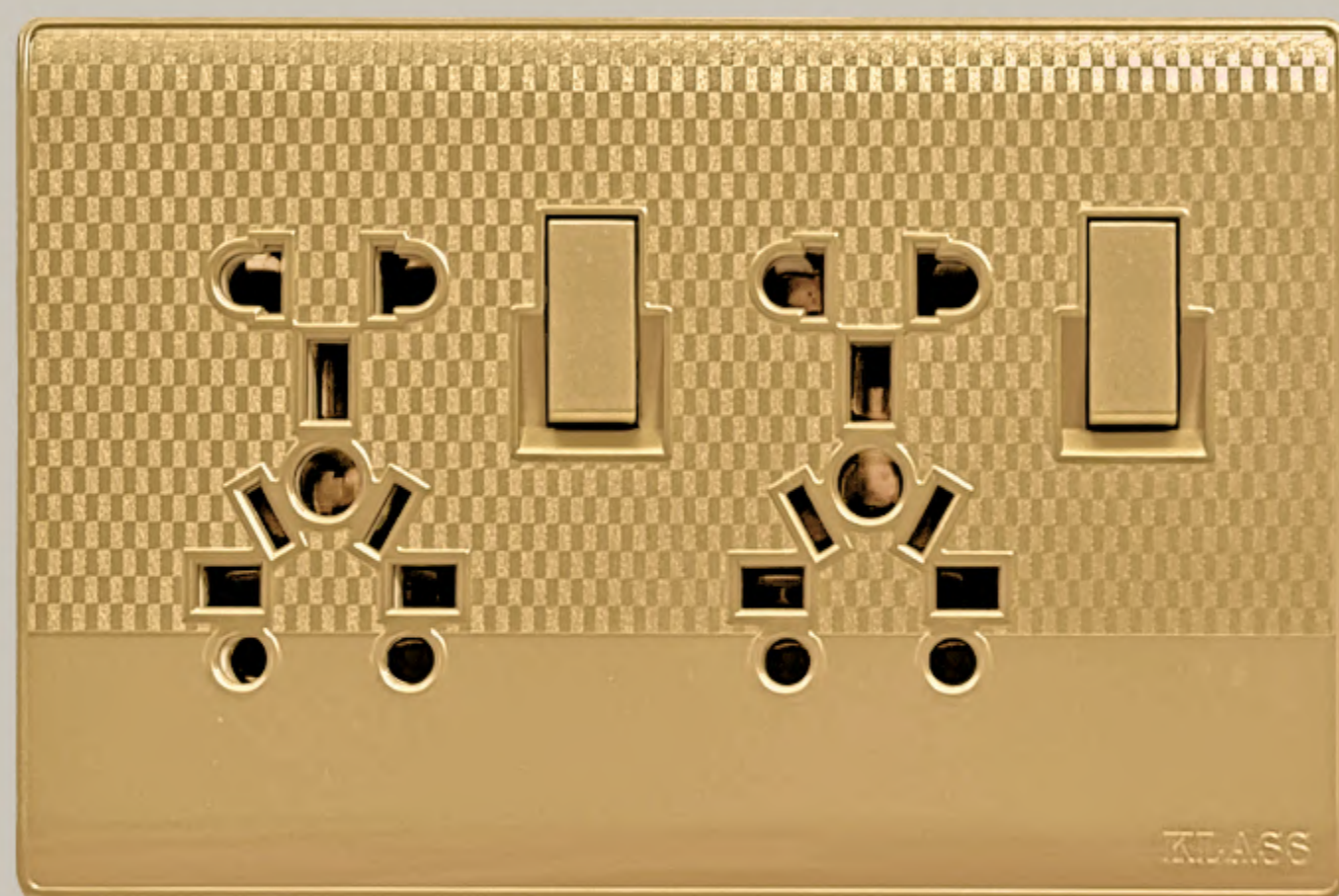
Single Data



Double Data



Tv + Phone



Two L/P 5 in 1



6 Gang



5 + 1



4 + 2



8 Gang



7 + 1



6 + 2



10 Gang



8 + 2



KLASS Electric Co.

Metal **Brown** Series



1 Gang / 2 Way



2 Gang



3 Gang



4 Gang



1+1



2+1



2+2



3+1



USB 2.0



L/P 5 in 1



P/P 15-Amp



P/S 45A



Single TV



Double TV



Single Phone



Double Phone



Fan Dimmer



Single Data



Double Data



Tv + Phone



Two L/P 5 in 1



6 Gang



5 + 1



4 + 2



8 Gang



7 + 1



6 + 2



10 Gang



8 + 2